



An innovative industry partnership towards restoring Narran Lakes

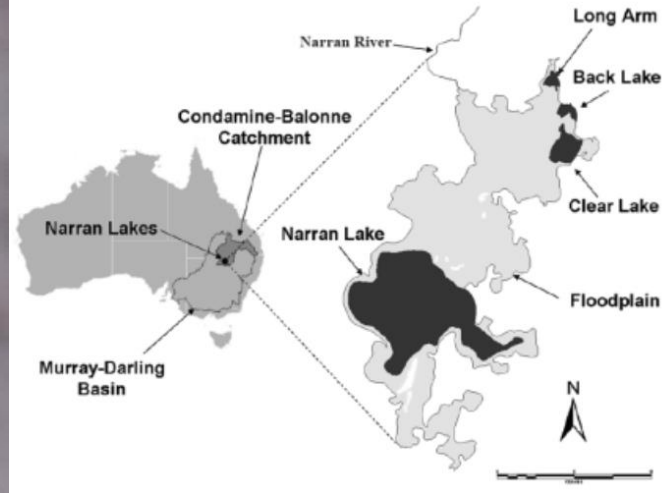
Michael Peat

michael.peat@awe.gov.au



We acknowledge
Australia's
Traditional Owners
and pay respect to
the Nations of the
Murray-Darling
Basin, their Elders
past, present and
emerging.

Artist: Commonwealth
Environmental Water Office staff,
under the guidance of Rebecca
Salcole



Dharriwaa Narran Lakes



Straw necked ibis - 14 Feb 2022
(photo taken during scientific monitoring)
Photo credit: Pat Johnston



Back Lake and Long Arm - 14 Feb 2022
(photo taken during scientific monitoring)
Photo credit: Joanne Ocock, NSW NPWS

Securing environmental outcomes using complementary measures

Complementary measures to water recovery are required to enhance environmental outcomes at Narran Lakes while minimising economic impacts.

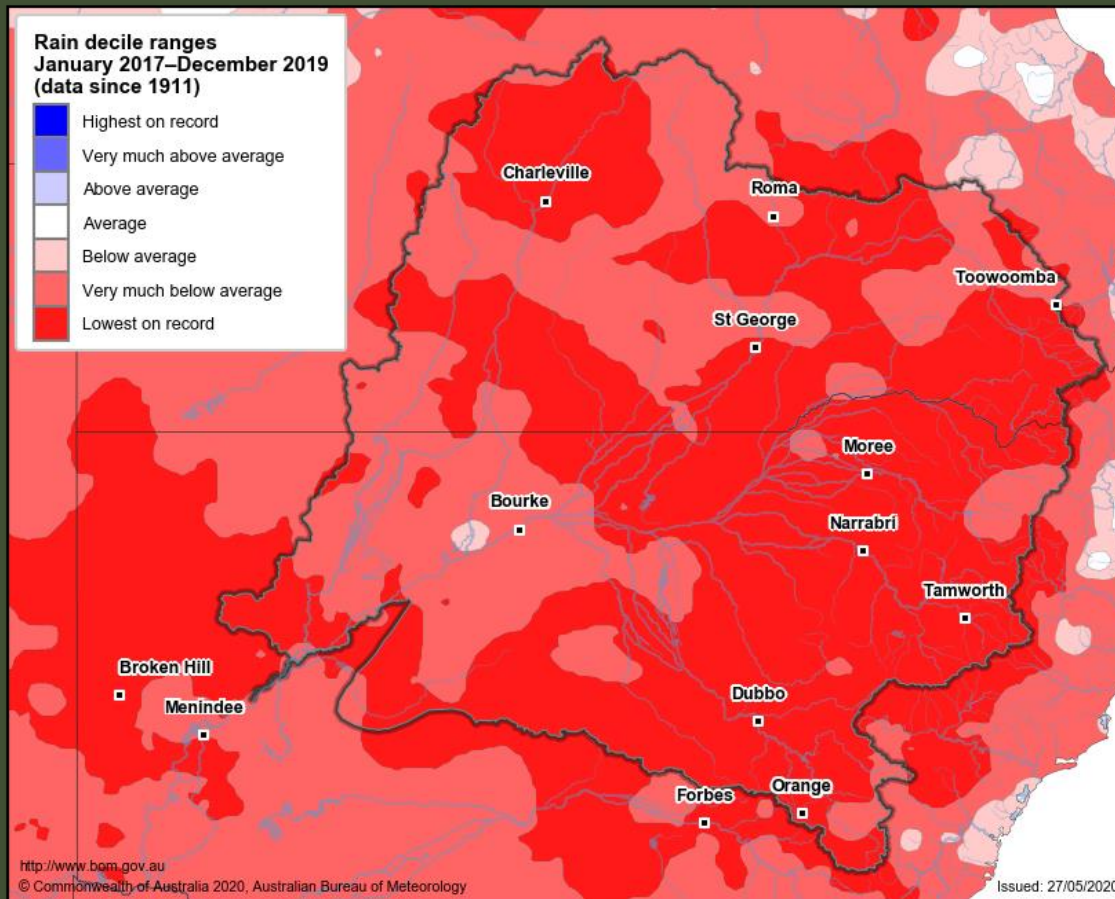
Queensland water management framework does not allow for temporary trade between some water licences in the Lower Balonne.

Innovative approaches to enhance environmental outcomes at Narran Lakes required collaboration with water licence holders.

Overview of the Lower Balonne



Co-designing options with stakeholders during the drought



Collaborative monitoring program established



Pilot grant program implemented in 2020 to rebuild waterbird habitat



Narran River



Back Lake

Waterbird habitat response to the pilot grant program



Poor condition
March 2020

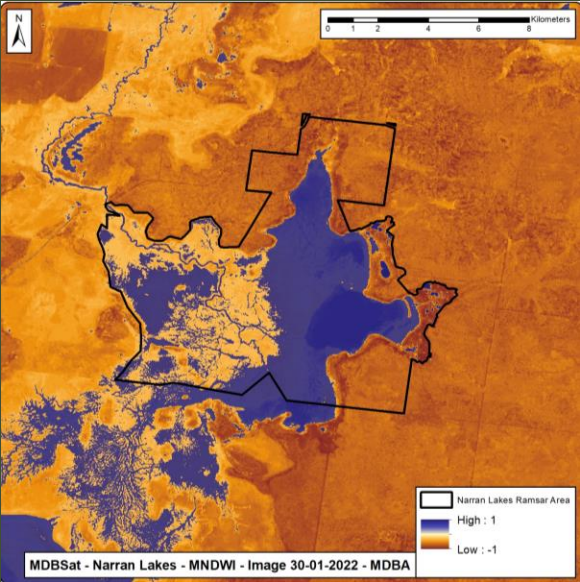


Intermediate condition
September 2020

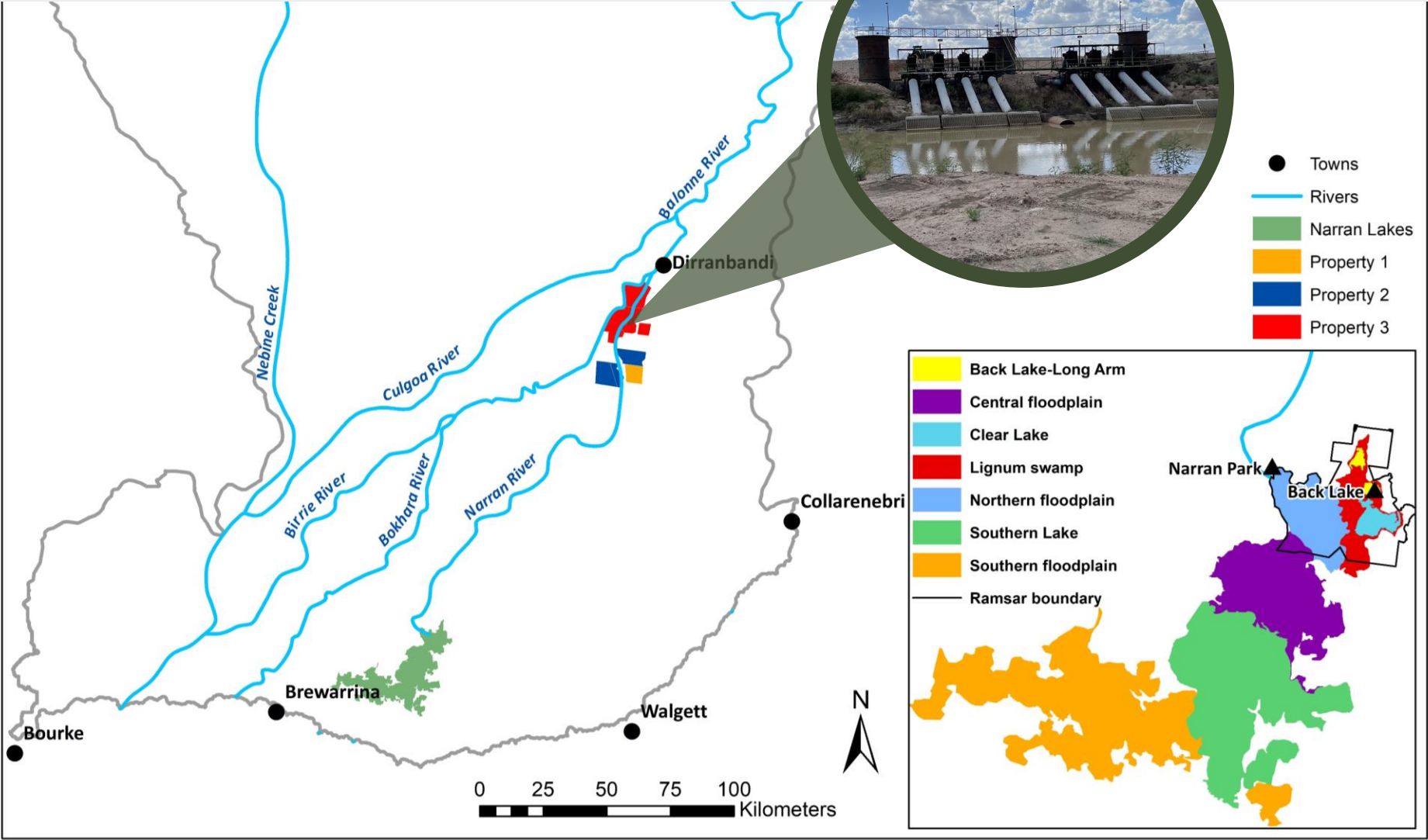


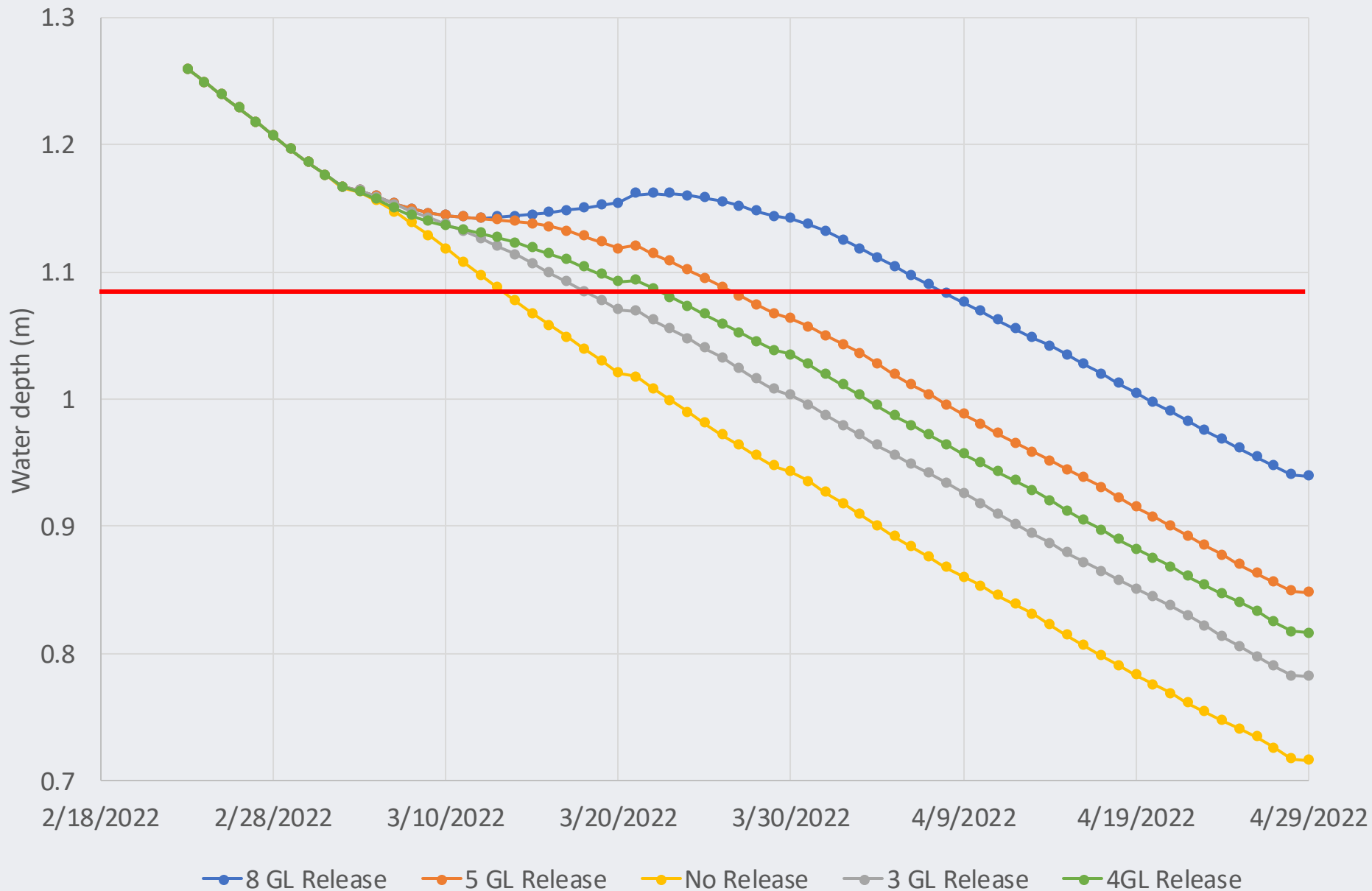
Good condition
December 2021

Managing ecological risk in 2022 by releasing water from private storages



Straw necked ibis nesting in January 2022





Water release options considered to maintain water level around nests



Straw necked ibis nests

Summary

- Providing additional flows to Narran Lakes is critical to support ecosystem recovery from drought.
- Grants are an innovative way of getting water to where and when it is needed most without permanently acquiring more water from production.
- This program builds on the collective efforts of First Nations, community, industry, and government to build resilience in the ecosystem after seven years of drought.
- The CEWO is looking to partner with stakeholders to implement complementary measures at other sites across the basin.



Photo credit: Joanne Ocock, NSW NPWS



Photo credit: Kate Brandis, UNSW



Photo credit: Pat Johnston

Contact your Local Engagement Officer:



Berri, SA

Michelle Campbell

M: 0437 064 664

E: Michelle.Campbell@awe.gov.au



Wodonga, VIC

Anthony Wilson

M: 0419 188 430

E: Anthony.Wilson@awe.gov.au



Moree, NSW

Jane Humphries

M: 0437 141 495

E: Jane.Humphries@awe.gov.au



Mildura, VIC

Richard Mintern

M: 0437 218 649

E: Richard.Mintern@awe.gov.au

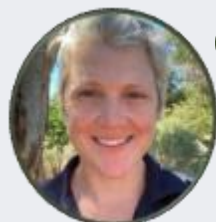


Griffith, NSW

Michele Groat

M: 0427 682 309

E: Michele.Groat@awe.gov.au



Wagga Wagga, NSW

Erin Lenon

M: 0417 965 714

E: Erin.Lenon@awe.gov.au



Goondiwindi, QLD

Sally Dickinson

M: 0448 759 658

E: Sally.Dickinson@awe.gov.au



Walgett, NSW

Jason Wilson

M: 0418 210 389

E: Jason.Wilson@awe.gov.au



Commonwealth Environmental Water Office

Thank you

Get in touch:



@theCEWH



Commonwealth Environmental Water Holder

Email: ewater@environment.gov.au