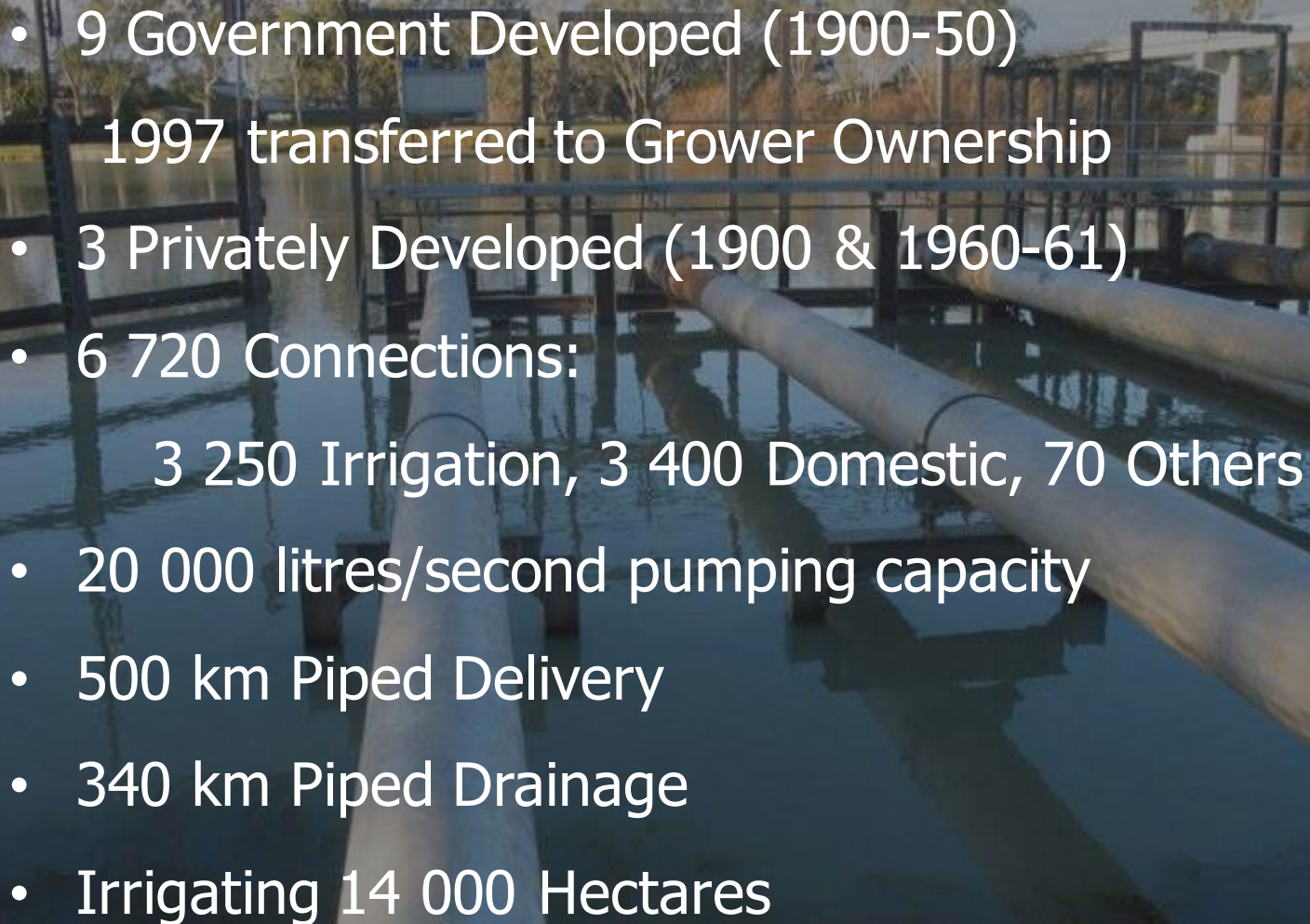


Risks and Opportunities: A perspective from Growers

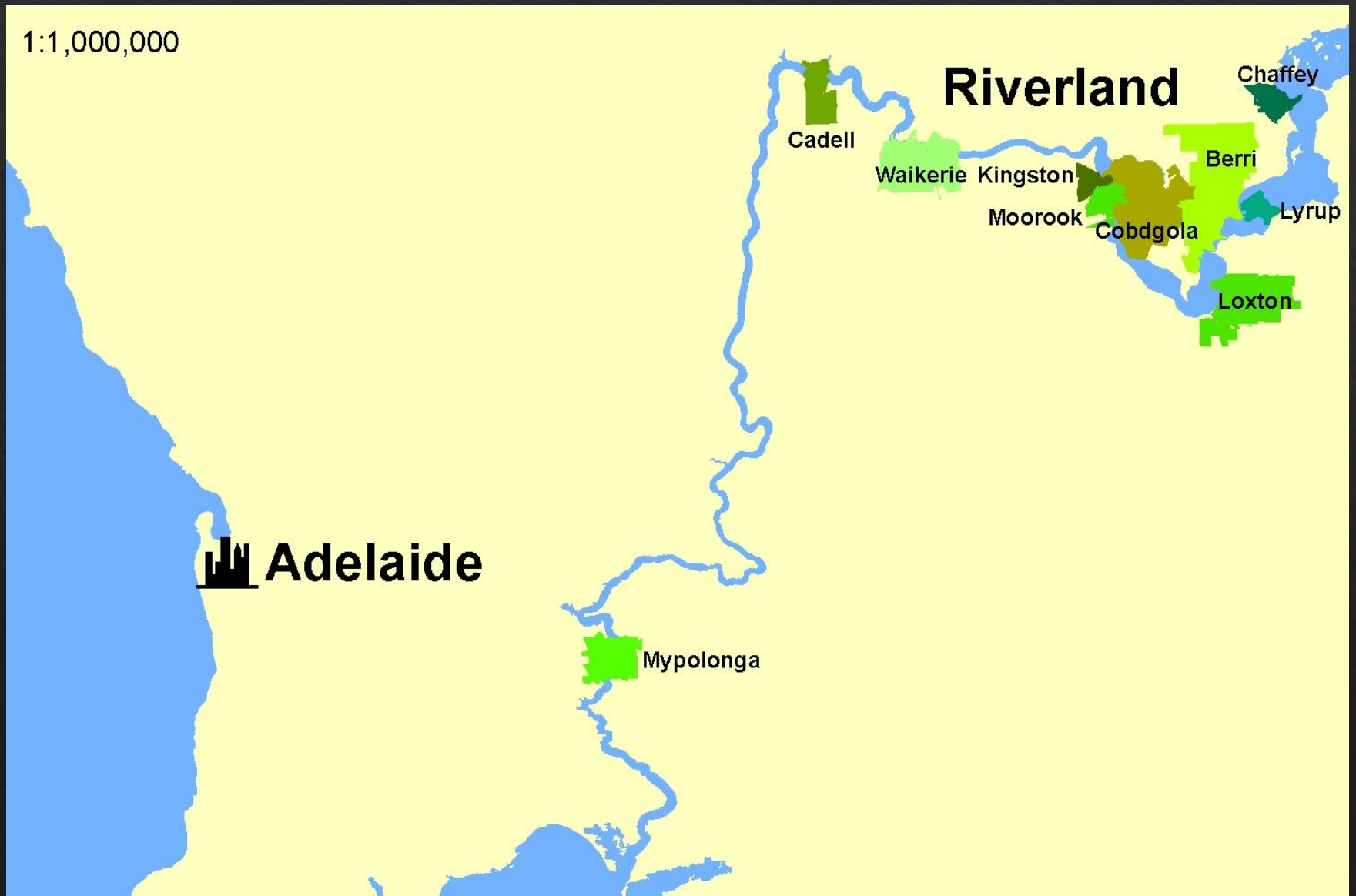
Amy Goodman – Water Manager CIT



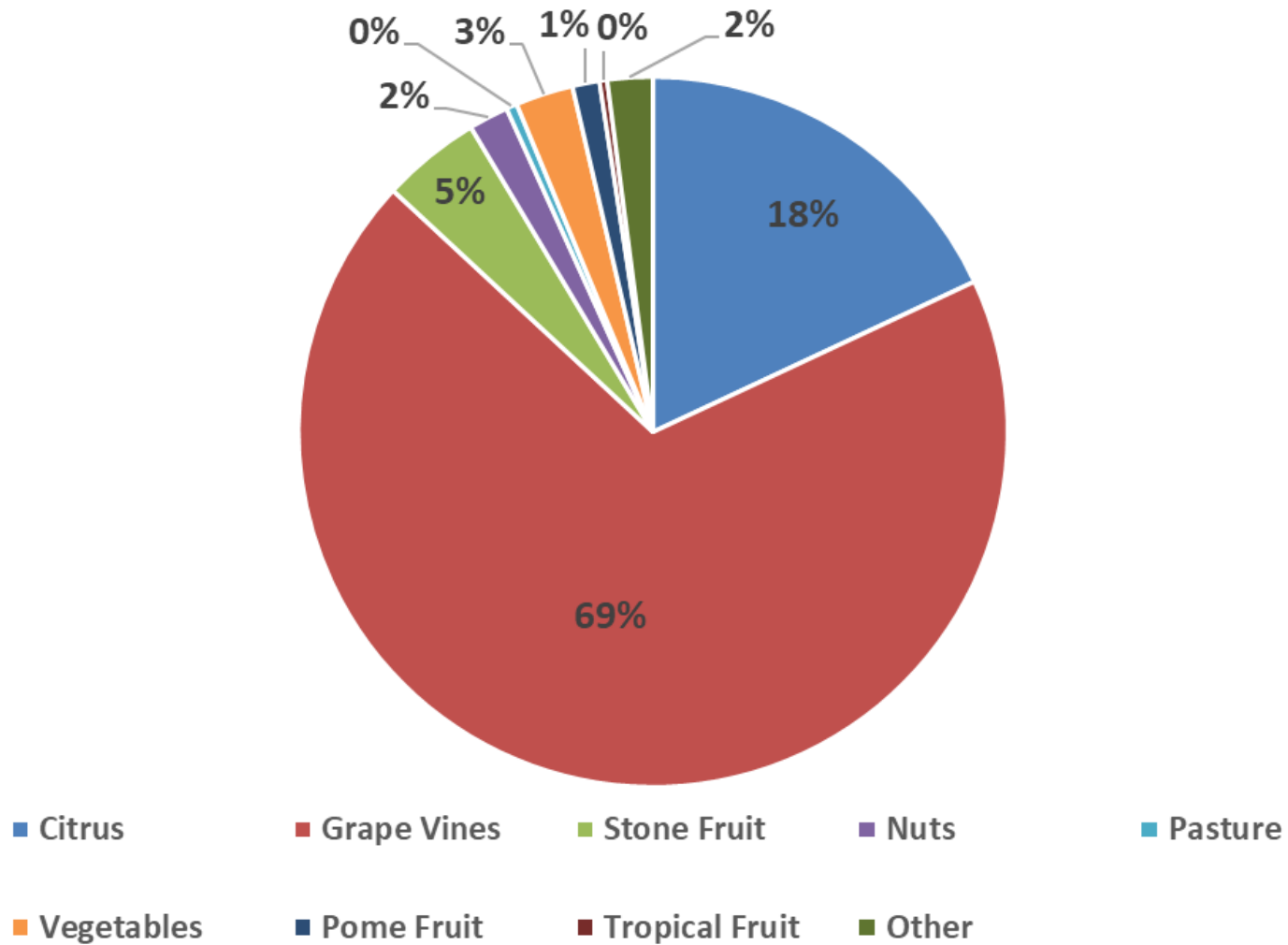
Managers of 12 Irrigation Districts in South Australia

- 
- 9 Government Developed (1900-50)
1997 transferred to Grower Ownership
 - 3 Privately Developed (1900 & 1960-61)
 - 6 720 Connections:
 - 3 250 Irrigation, 3 400 Domestic, 70 Others
 - 20 000 litres/second pumping capacity
 - 500 km Piped Delivery
 - 340 km Piped Drainage
 - Irrigating 14 000 Hectares

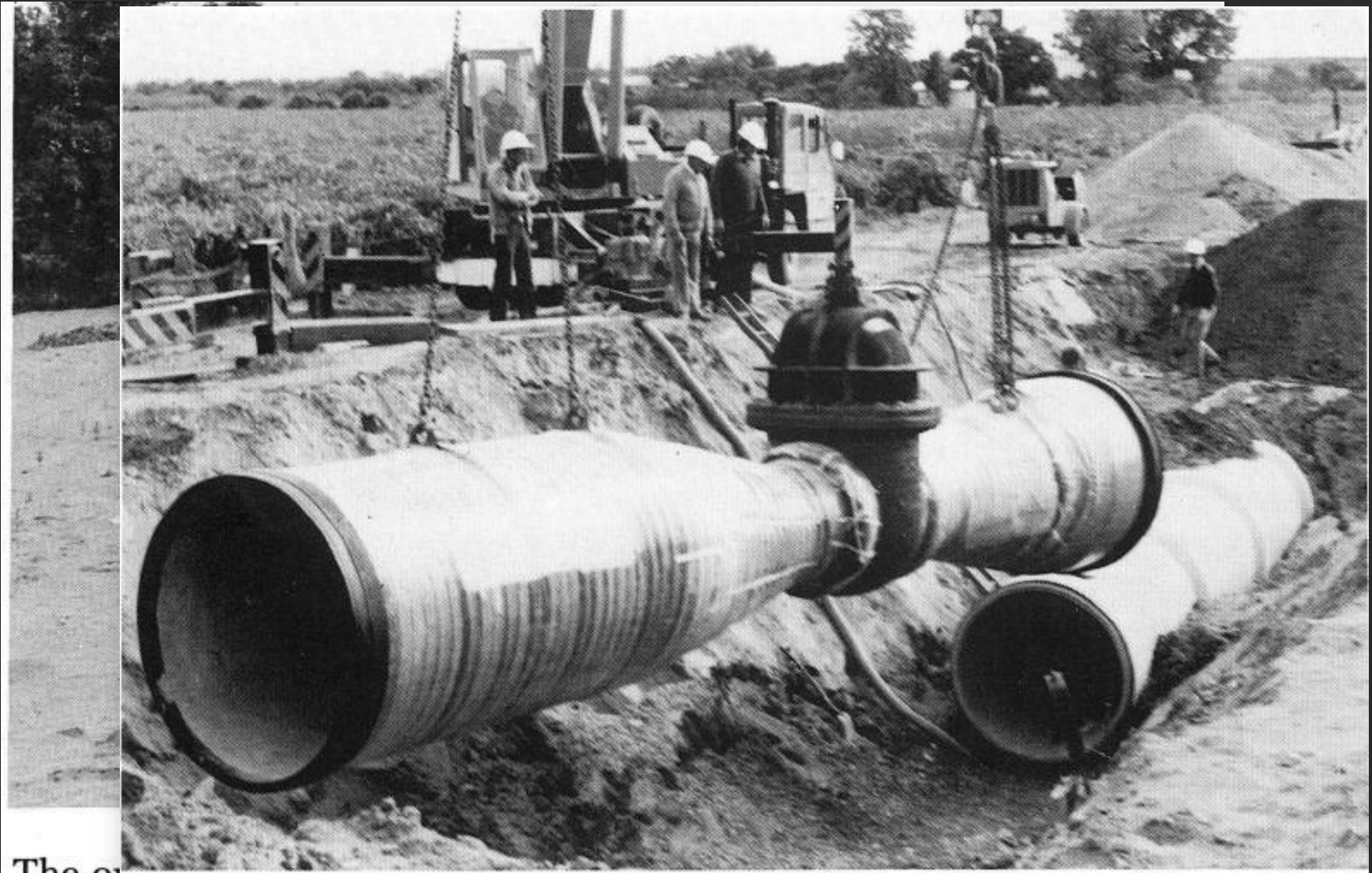
Our irrigation footprint



What we grow



Investment in Efficiency



The on

Constructing the new pipe main system, Monash Rd., May, 1981.

(Photos: E. & W. S. Dept., Riverland)

Investment in Efficiency



1918 using engines fuelled by gas obtained from burning charcoal.





Main

Place An Order

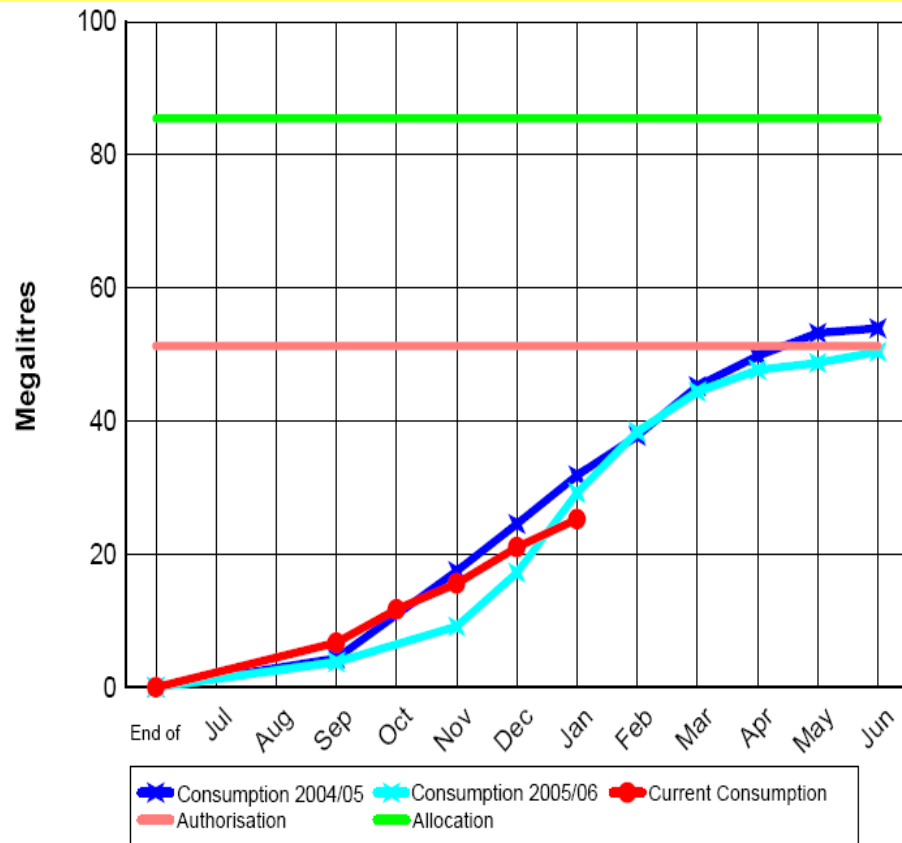
Flow Rate - Max 60 (l/s)

26

Place Order(s)

| Date | 0000 | 0100 | 0200 | 0300 | 0400 | 0500 | 0600 | 0700 | 0800 | 0900 | 1000 | 1100 | 1200 | 1300 |
|--------|------|------|------|------|------|------|------|------|------|------|------|------|------|------|
| Wed 25 | 120 | 120 | 120 | 120 | 120 | 120 | 120 | 120 | 120 | 120 | 120 | 120 | 120 | 120 |
| Thu 26 | 120 | 120 | 120 | 120 | 120 | 120 | 120 | 120 | 120 | 120 | 120 | 120 | 120 | 120 |
| Fri 27 | 120 | 120 | 120 | 120 | 120 | 120 | 120 | 120 | 120 | 120 | 120 | 120 | 120 | 120 |
| Sat 28 | 94 | 94 | 120 | 120 | 120 | 120 | 120 | 120 | 120 | 120 | 120 | 120 | 120 | 120 |
| Sun 29 | 120 | 120 | 120 | 120 | 120 | 120 | 120 | 120 | 120 | 120 | 120 | 120 | 120 | 120 |
| Mon 30 | 120 | 120 | 120 | 120 | 120 | 120 | 120 | 120 | 120 | 120 | 120 | 120 | 120 | 120 |
| Tue 31 | 120 | 120 | 120 | 120 | 120 | 120 | 120 | 120 | 120 | 120 | 120 | 120 | 120 | 120 |
| Wed 01 | 120 | 120 | 120 | 120 | 120 | 120 | 120 | 120 | 120 | 120 | 120 | 120 | 120 | 120 |
| Thu 02 | 120 | 120 | 120 | 120 | 120 | 120 | 120 | 120 | 120 | 120 | 120 | 120 | 120 | 120 |
| Fri 03 | 120 | 120 | 120 | 120 | 120 | 120 | 120 | 120 | 120 | 120 | 120 | 120 | 120 | 120 |
| Sat 04 | 120 | 120 | 120 | 120 | 120 | 120 | 120 | 120 | 120 | 120 | 120 | 120 | 120 | 120 |
| Sun 05 | 120 | 120 | 120 | 120 | 120 | 120 | 120 | 120 | 120 | 120 | 120 | 120 | 120 | 120 |
| Mon 06 | 120 | 120 | 120 | 120 | 120 | 120 | 120 | 120 | 120 | 120 | 120 | 120 | 120 | 120 |
| Tue 07 | 120 | 120 | 120 | 120 | 120 | 120 | 120 | 120 | 120 | 120 | 120 | 120 | 120 | 120 |
| Wed 08 | 120 | 120 | 120 | 120 | 120 | 120 | 120 | 120 | 120 | 120 | 120 | 120 | 120 | 120 |

| Outlet 6806 | | Start | | | | Finish | | | | |
|--------------------------|--------------------------|--------|-------|----------|--------------|--------|-------|-------------|-------|------------|
| Cancel | Modify | Day | Time | Run Time | Amount (l/s) | Day | Time | Volume (Ml) | Shift | Receipt No |
| <input type="checkbox"/> | <input type="checkbox"/> | Fri 27 | 21:00 | 5:00 | 26 | Sat 28 | 02:00 | 0.468 | 0 | |



Other information you should be aware of:

- ⚠ You have used 25 ML so far this season which represents 49 % of your authorisation.
- ⚠ The district average use is 56 % of authorisation.
- ✓ Last year you used 12 % of your water during peak electricity time
- ✓ So far this year you have used 14 % of your water during peak electricity time
- ⚠ So far this year you have irrigated in the peak electricity periods for less than 50 % of the time. Because of this your peak usage will not attract a Peak Energy Surcharge of \$4.10 per ML unless your peak usage increases above 50% by the end of the irrigation year.



Delivery shortfall – impacts and options

