



# Welcome to northeast Victoria

---

# Acknowledgement of Country

"Our waterways are the lifeblood of Country; they are the blood and tears of our ancestors. Our land and rivers remain central to Taungurung Identity; they are the spirit of the land. We have a deep physical and spiritual connection to our rivers, they flow through Country watering our significant sites, bringing life and maintaining our connection with our ancestors. We are custodians of our waterways; it is our responsibility to heal our rivers and wetlands, protecting our living biocultural knowledge and improving the health and wellbeing of our people."

- Taungurung Land and Waters Council.



"Our old people would come to the high country during the summer, following spur lines and heading up into the mountains as the food sources lower down finished. They would move through the landscape – harvesting food resources without exhausting them, and caring for the Country along the way, using firestick management at the right time so that it didn't damage the food source. They followed the Bogong Moth paths as well as many other food sources, sustaining themselves by eating little by little as they went on their journey. They looked for the right sorts of stones as they travelled, to make tools."

- GunaiKurnai Whole of Country Plan, 2015



"Yorta Yorta people have managed and cared for their Country since time immemorial - it is not a new concept or a privilege to be managing Country; it is our responsibility. Yorta Yorta must be appropriately resourced to continue this stewardship role at all levels from research and policy development through to on-ground caring for Country roles and service delivery."

- Yorta Yorta Nation Aboriginal Corporation



"Our people have been managing country for thousands of years, and it has looked after us. We have an inherited responsibility to look after it now. This land is borrowed from the next generation, and we must leave it in as good or better condition for them, and in this modern time, we must do that together, all of us"

- Duduroa Dhargal Aboriginal Corporation

"Jaithmathang Senior Elder Gaengalla Jumma Myermyal Mineke Yin is looking forward to welcoming everyone to Jaithmathang Ancestral Country and to share in the Spiritual Cultural and Heritage of the oldest, still living still practicing People in the World"

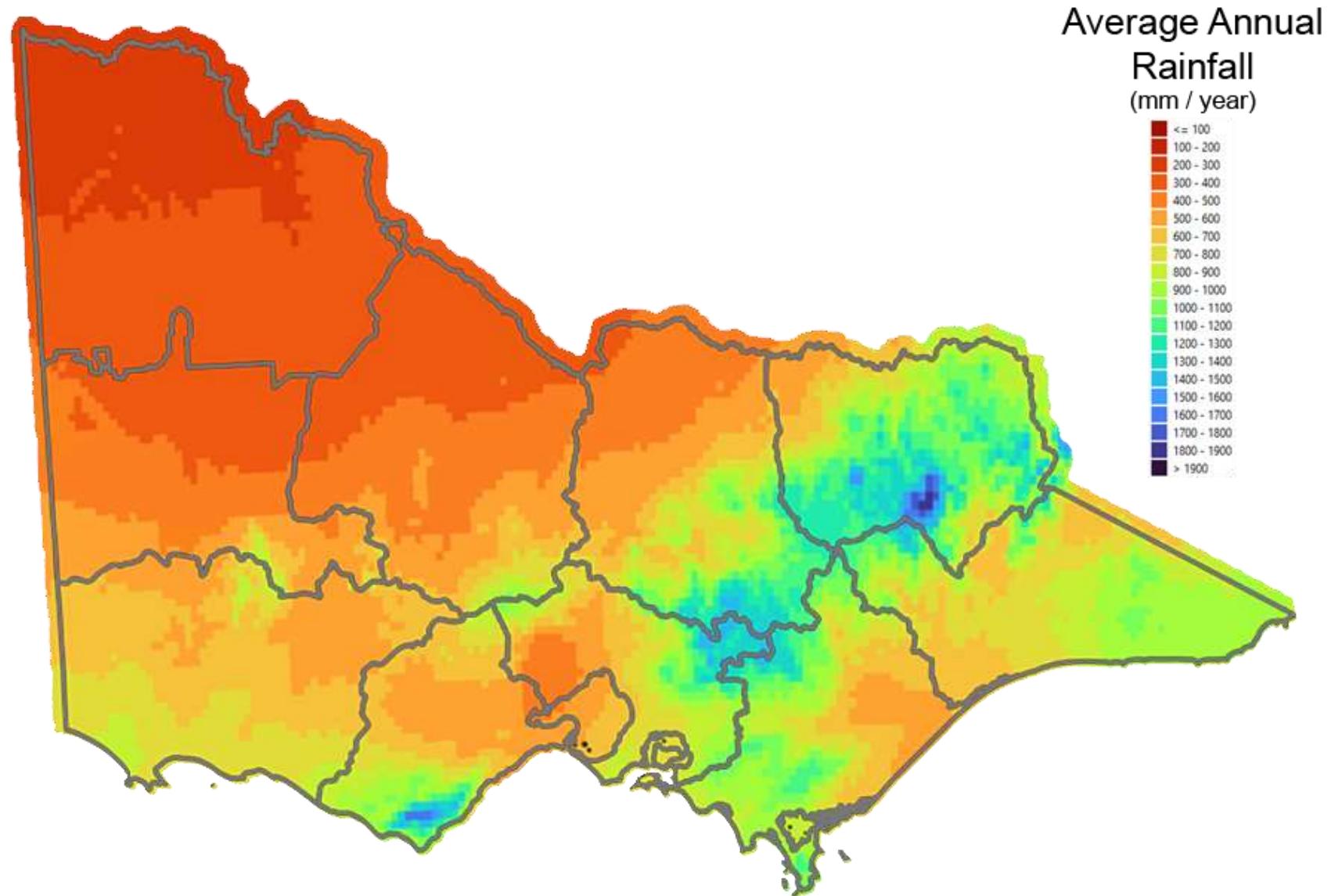
- Jaithmathang TABOO

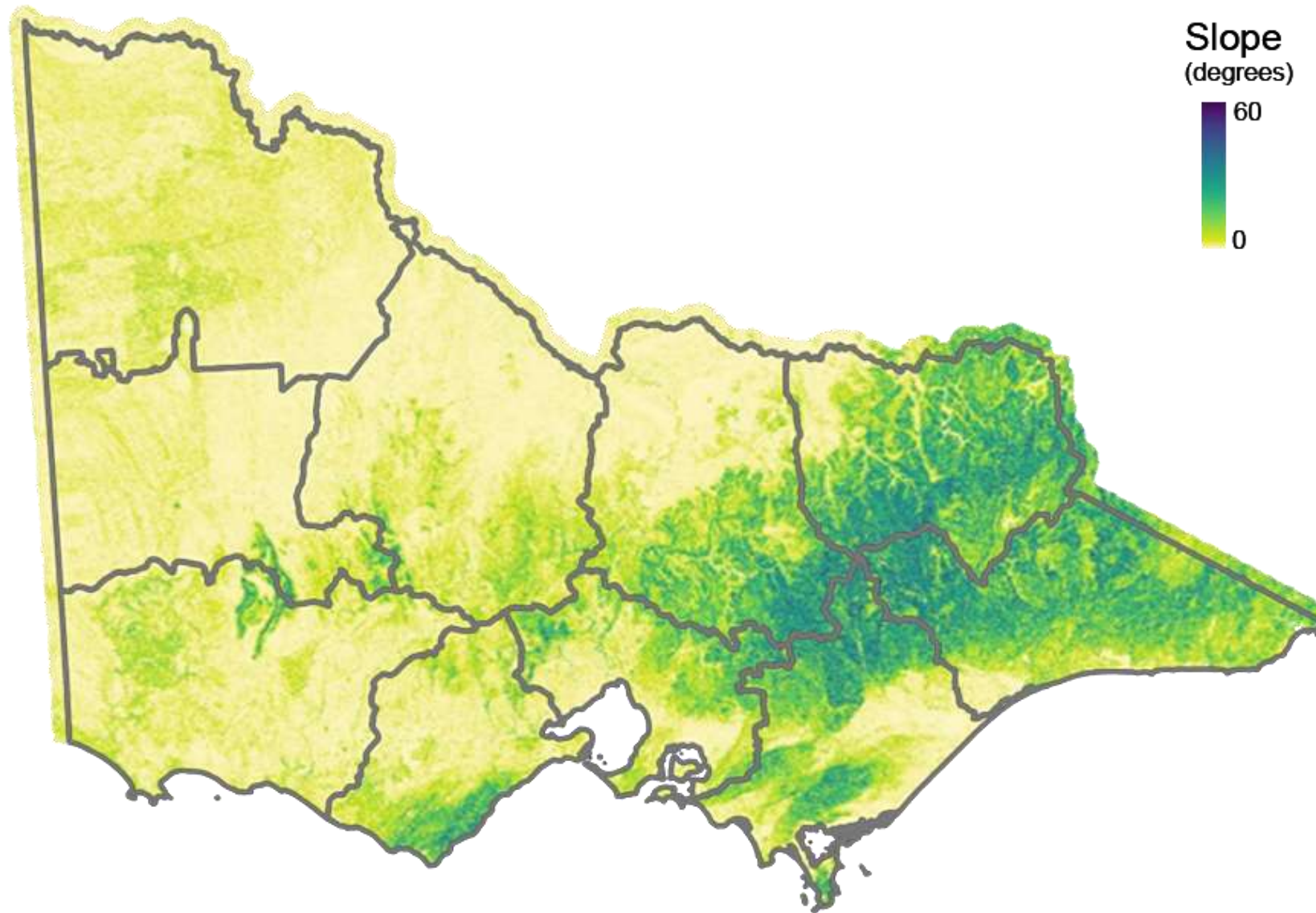
"Nhakai Ngarrinbai Warra-Ngalindha Warrabe 'Look, Listen and Hear Our Water Speak' Dhudhuroa and Waywurru Language (2018)", Dhudhuroa Waywurru Nations Aboriginal Corporation



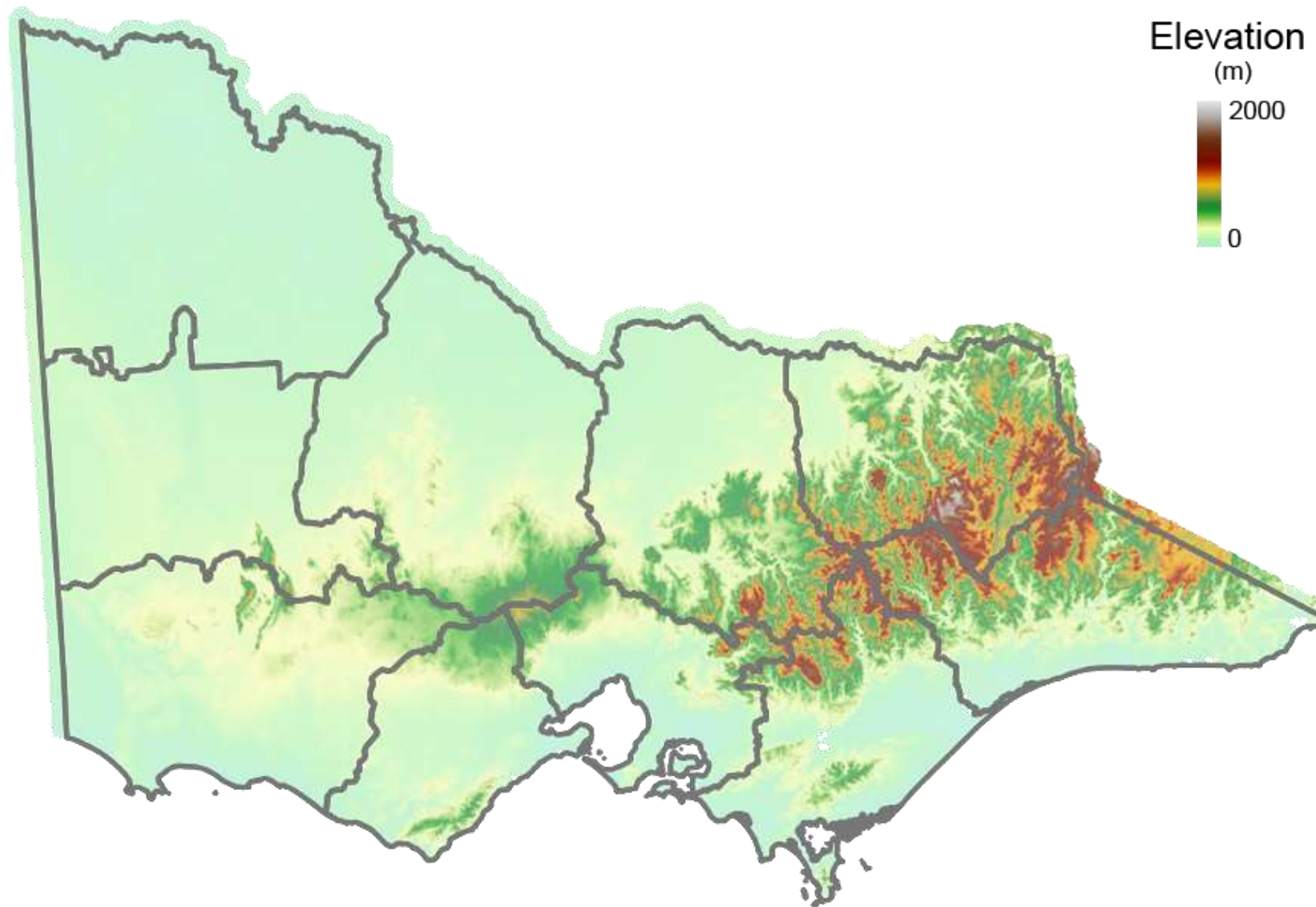
What makes this region different?



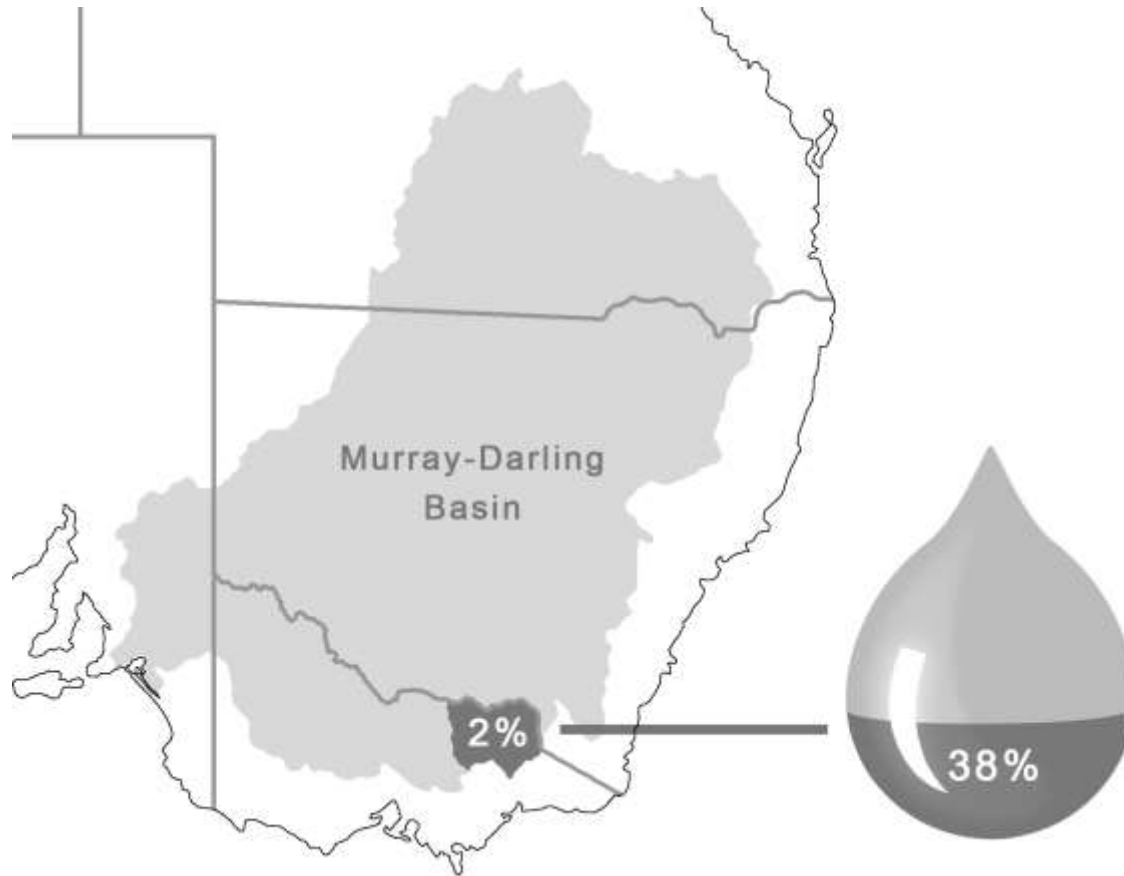




OFFICIAL



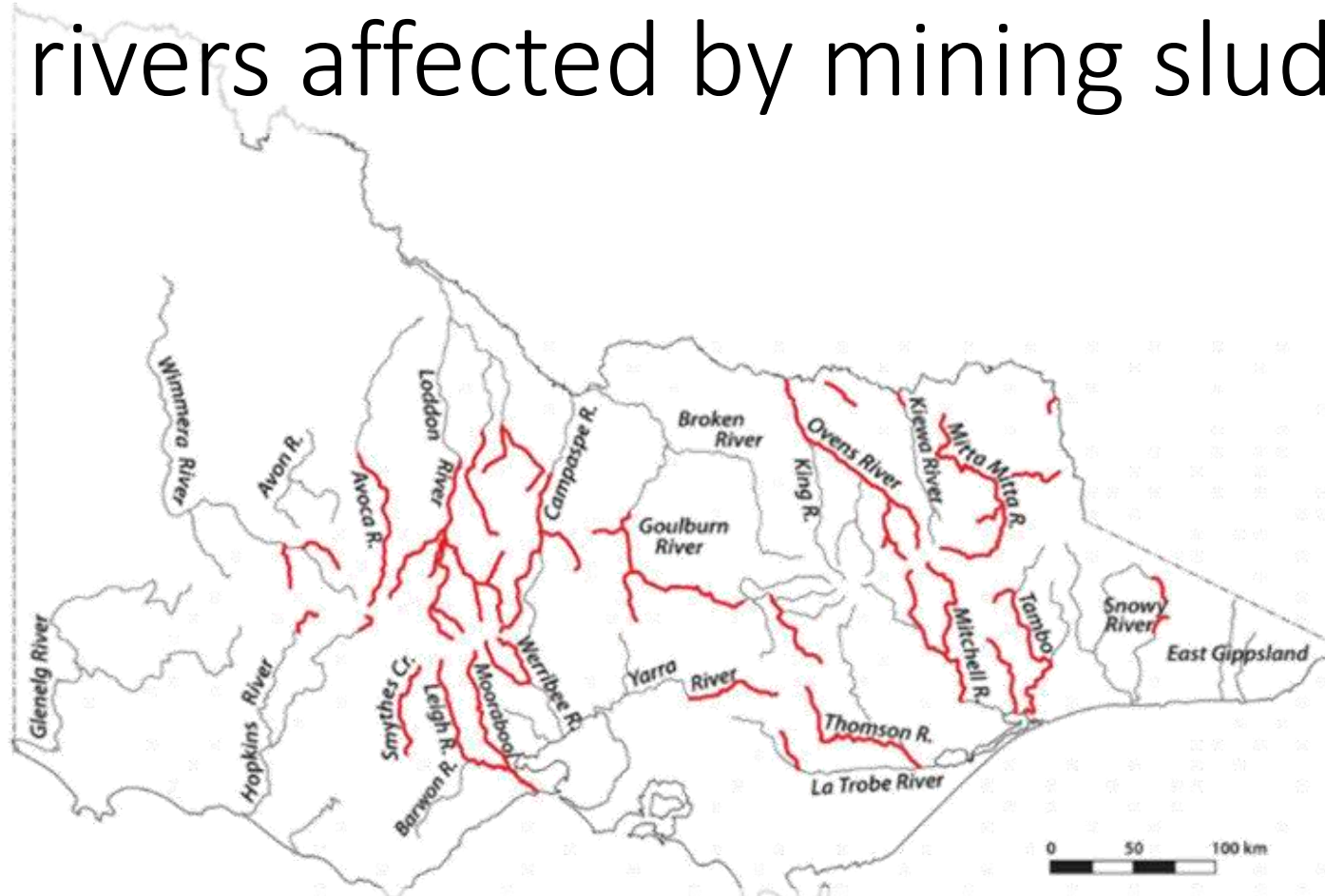
OFFICIAL



- 38% of the water in the Murray-Darling Basin System
- 10,602km designated waterways
- 49,000 hectares wetlands (many on private land)
- Lower Ovens: one of the last remaining unregulated wetland complexes in the MDB



# Victorian rivers affected by mining sludge 1886

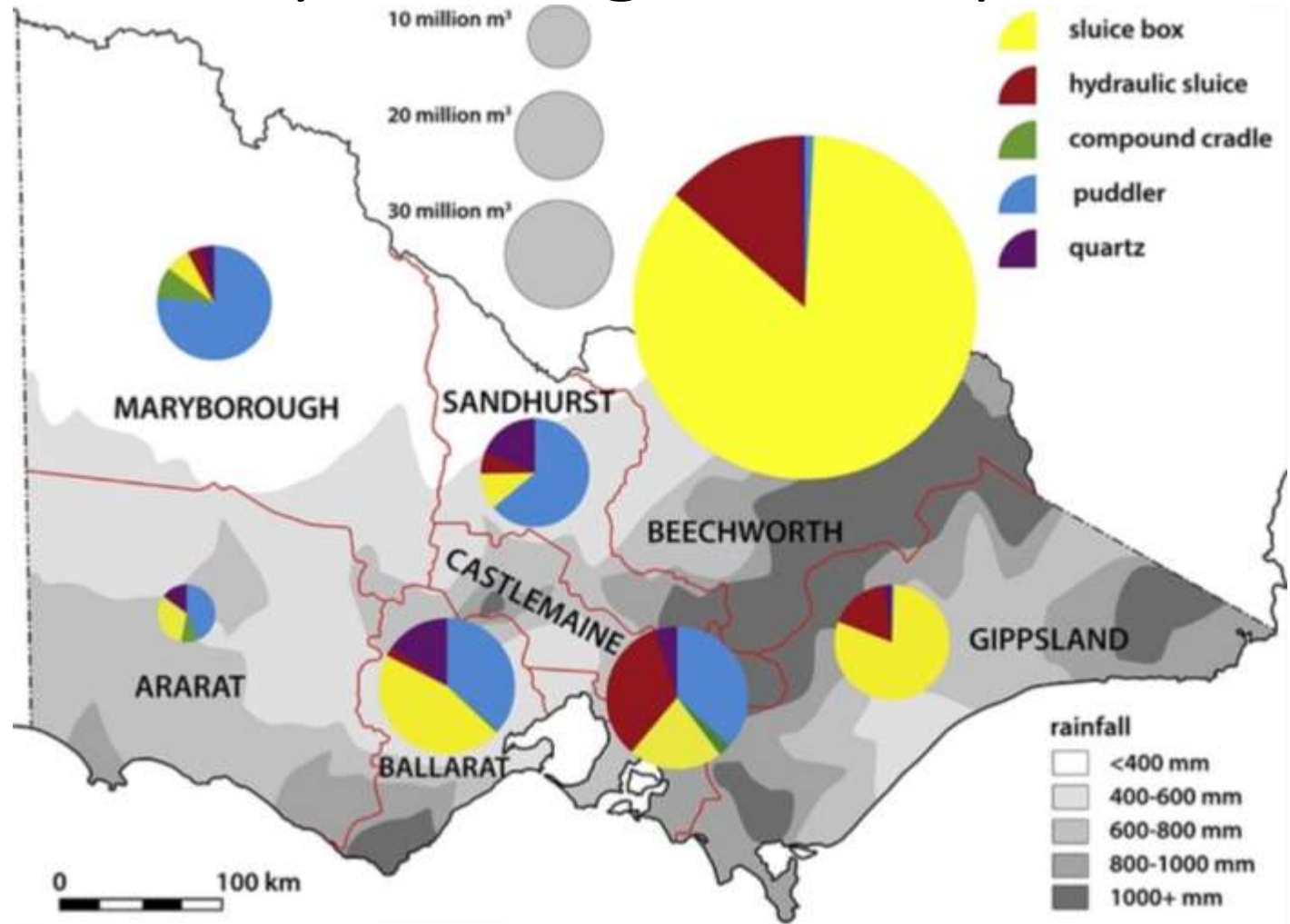


*Source: Reconstruction of historical riverine sediment production on the goldfields of Victoria, Australia*



# Production of alluvium by mining technique 1859 – 1891

*Source:  
Reconstruction of  
historical riverine  
sediment production  
on the goldfields of  
Victoria, Australia*



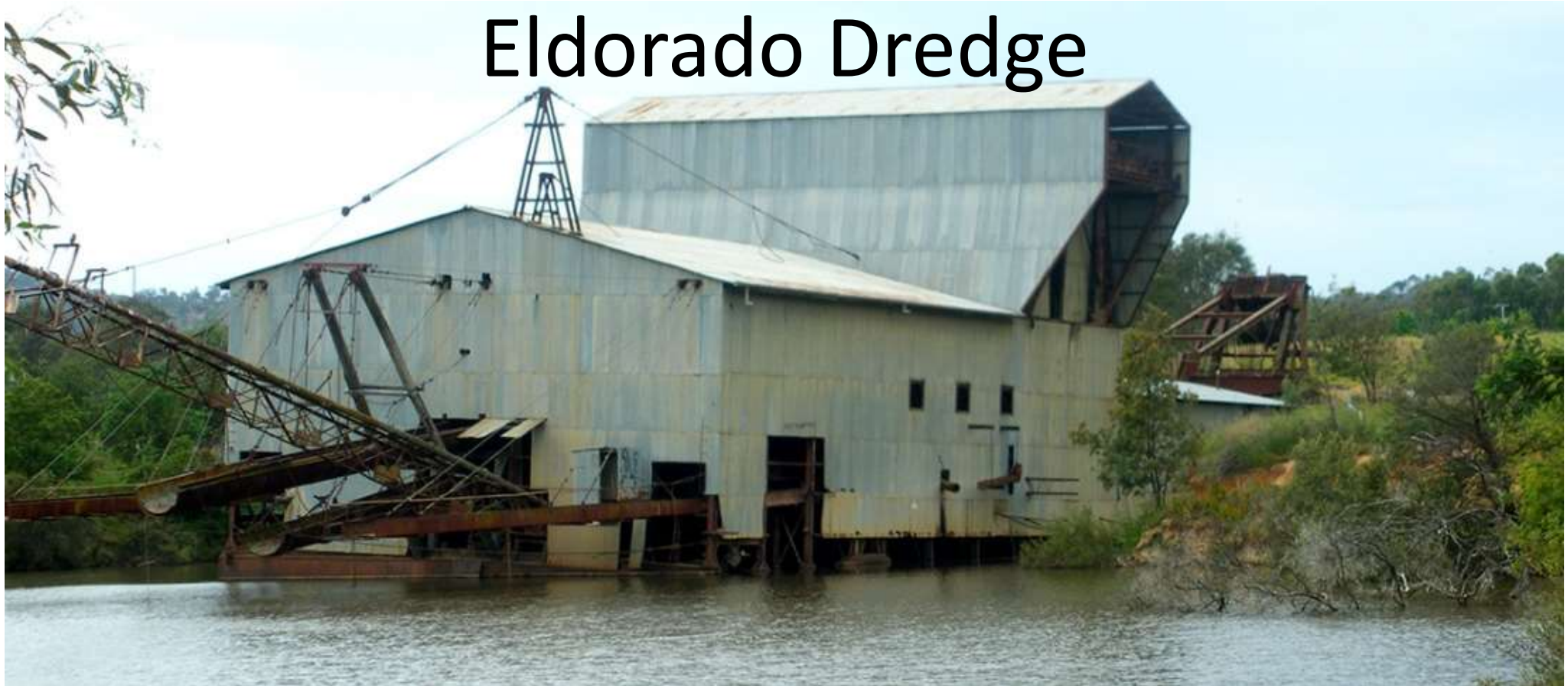


Hydraulic sluicing  
with a giant nozzle,  
Pioneer Claim, Mitta  
Mitta River

*Source: State Library  
of Victoria*



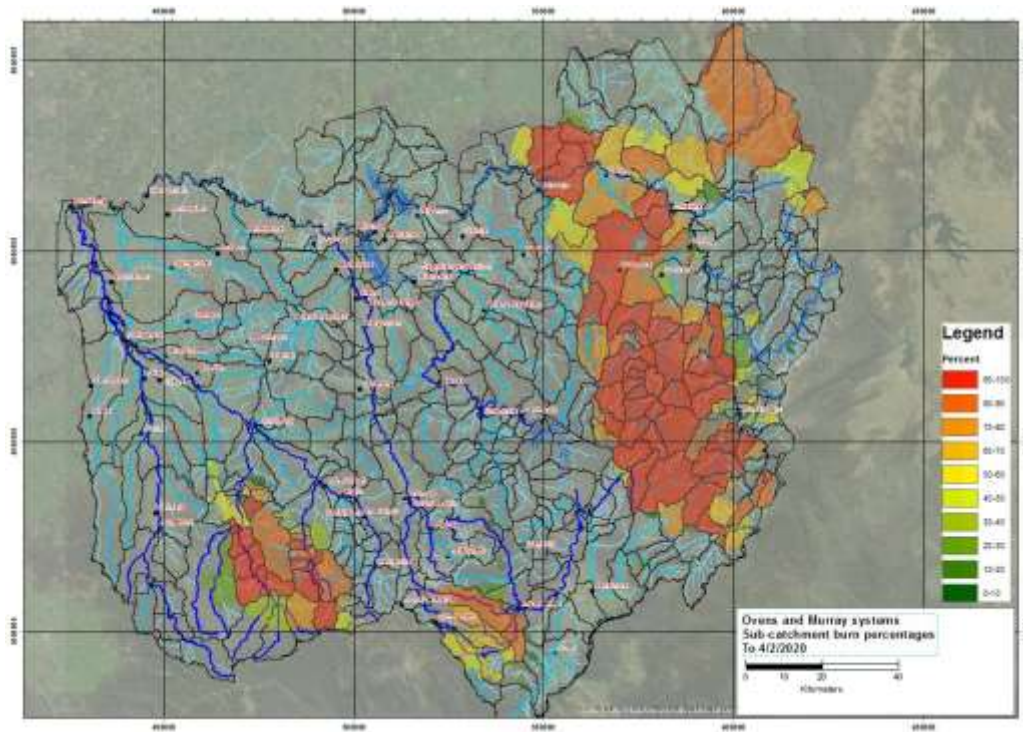
# Eldorado Dredge



*Source: 2022 Rivers of Gold: Report on the Impact of Historical Gold Mining on the Loddon River and its Major Tributaries, Victoria*

# Bushfires 2020

- 22% of North East CMA region (431,100ha)
- 54% of the areas upstream of Lake Hume (Vic & NSW)



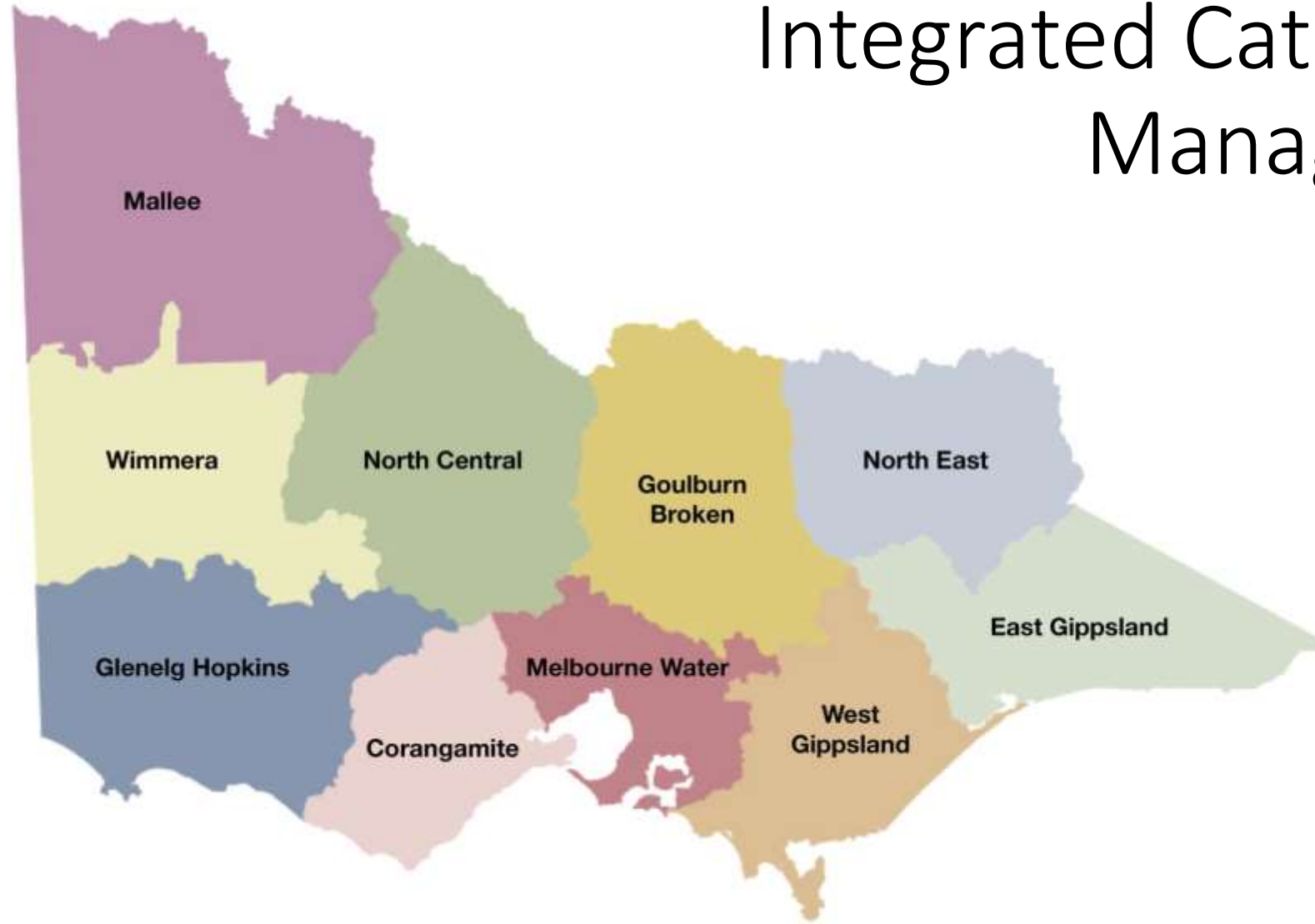


# ... and Flooding Rains 2022-23



# The juggle

# Integrated Catchment Management





OFFICIAL



OFFICIAL





Photo Credit:  
Ann Killeen





OFFICIAL



OFFICIAL

OFFICIAL



OFFICIAL



OFFICIAL



OFFICIAL

Thank you