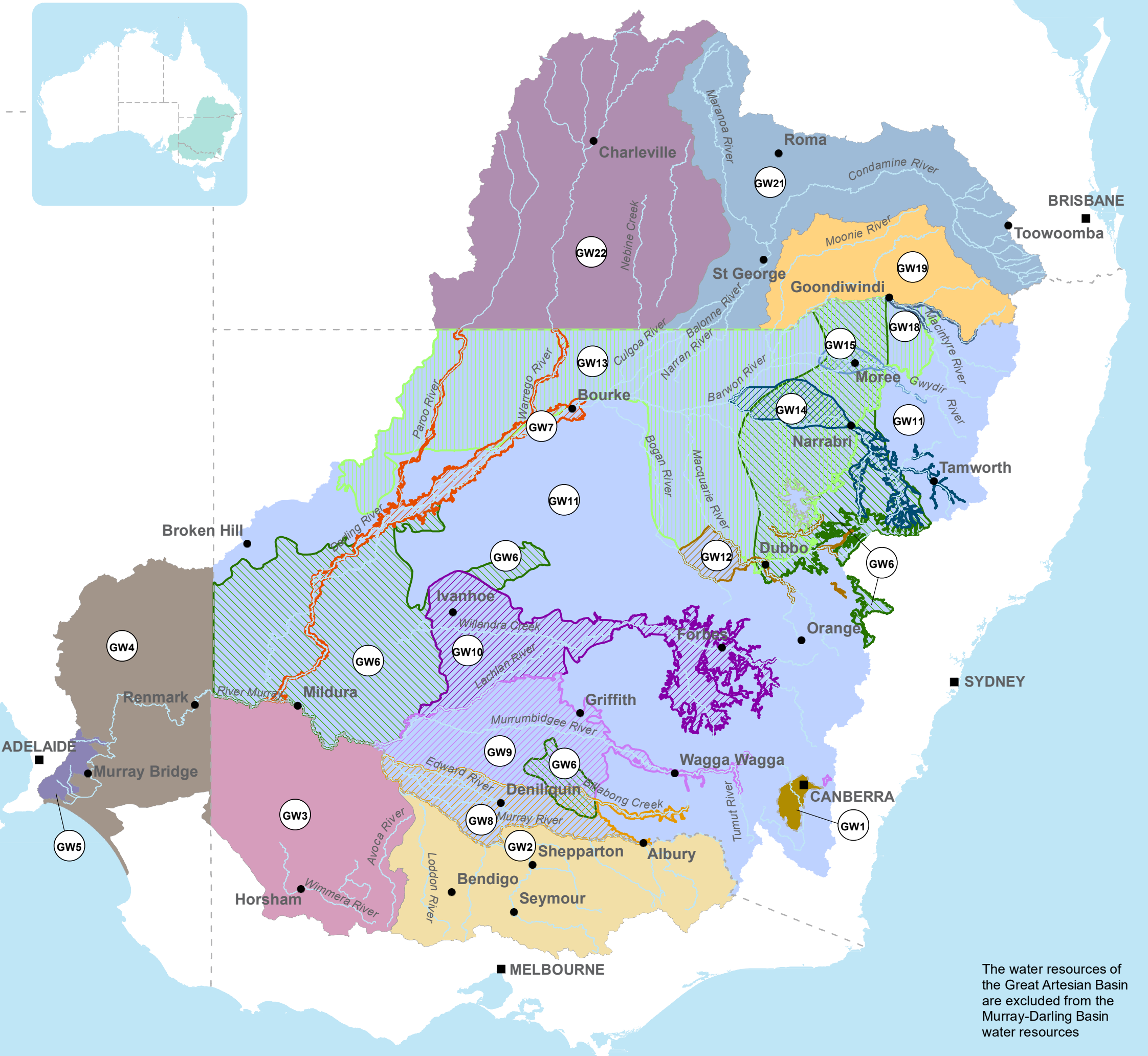
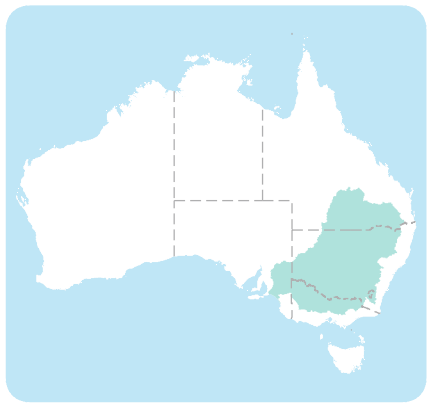


Murray-Darling Basin Water Resource Plan Areas — Groundwater



The water resources of the Great Artesian Basin are excluded from the Murray-Darling Basin water resources

- capital city
- main town
- state border
- main rivers

- GW1 Australian Capital Territory (groundwater)
- GW2 Goulburn-Murray
- GW3 Wimmera-Mallee (groundwater)
- GW4 South Australian Murray Region
- GW5 Eastern Mount Lofty Ranges
- GW6 NSW Murray-Darling Basin Porous Rock
- GW7 Darling Alluvium
- GW8 Murray Alluvium
- GW9 Murrumbidgee Alluvium
- GW10 Lachlan Alluvium
- GW11 NSW Murray-Darling Basin Fractured Rock

- GW12 Macquarie-Castlereagh Alluvium
- GW13 NSW Great Artesian Basin Shallow
- GW14 Namoi Alluvium
- GW15 Gwydir Alluvium
- GW18 NSW Border Rivers Alluvium
- GW19 Queensland Border Rivers-Moonie
- GW21 Condamine-Balonne
- GW22 Warrego-Paroo-Nebine



0 100 200 km

Sources: Geoscience Australia © Topo 250K data (Series 3), Geoscience Australia © Topo 2.5 million data (2003), Murray-Darling Basin Authority © Groundwater Water Resource Plan Areas. Map amended:2019.