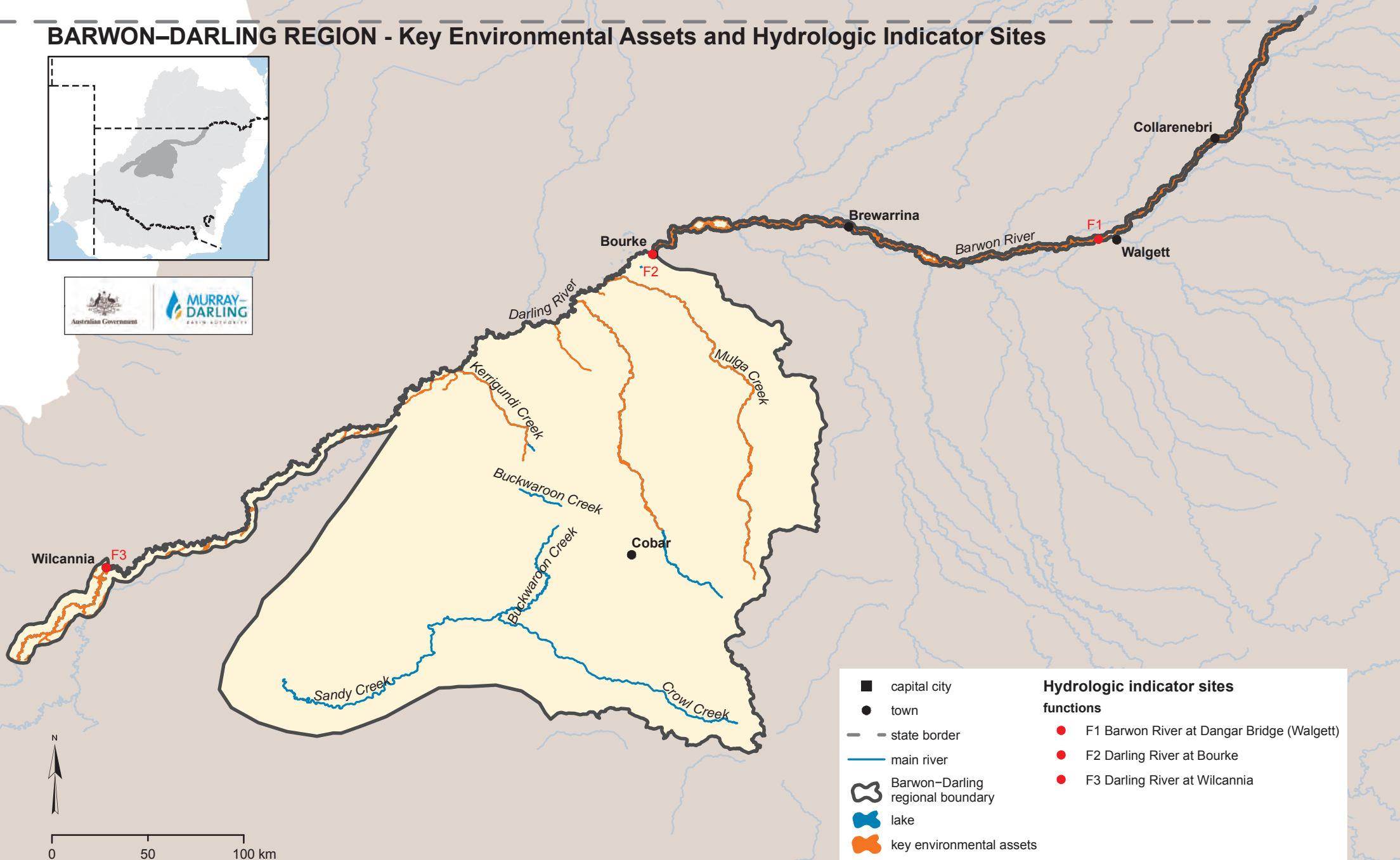
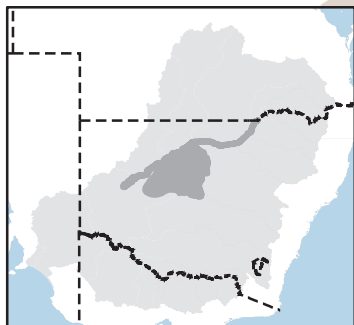


# BARWON-DARLING REGION - Key Environmental Assets and Hydrologic Indicator Sites



0 50 100 km

<ul style="list-style-type: none"> <li>■ capital city</li> <li>● town</li> <li>— state border</li> <li>— main river</li> <li>⬭ Barwon-Darling regional boundary</li> <li>⬭ lake</li> <li>⬭ key environmental assets</li> </ul>	<p><b>Hydrologic indicator sites</b></p> <p><b>functions</b></p> <ul style="list-style-type: none"> <li>● F1 Barwon River at Dangar Bridge (Walgett)</li> <li>● F2 Darling River at Bourke</li> <li>● F3 Darling River at Wilcannia</li> </ul>
--	--